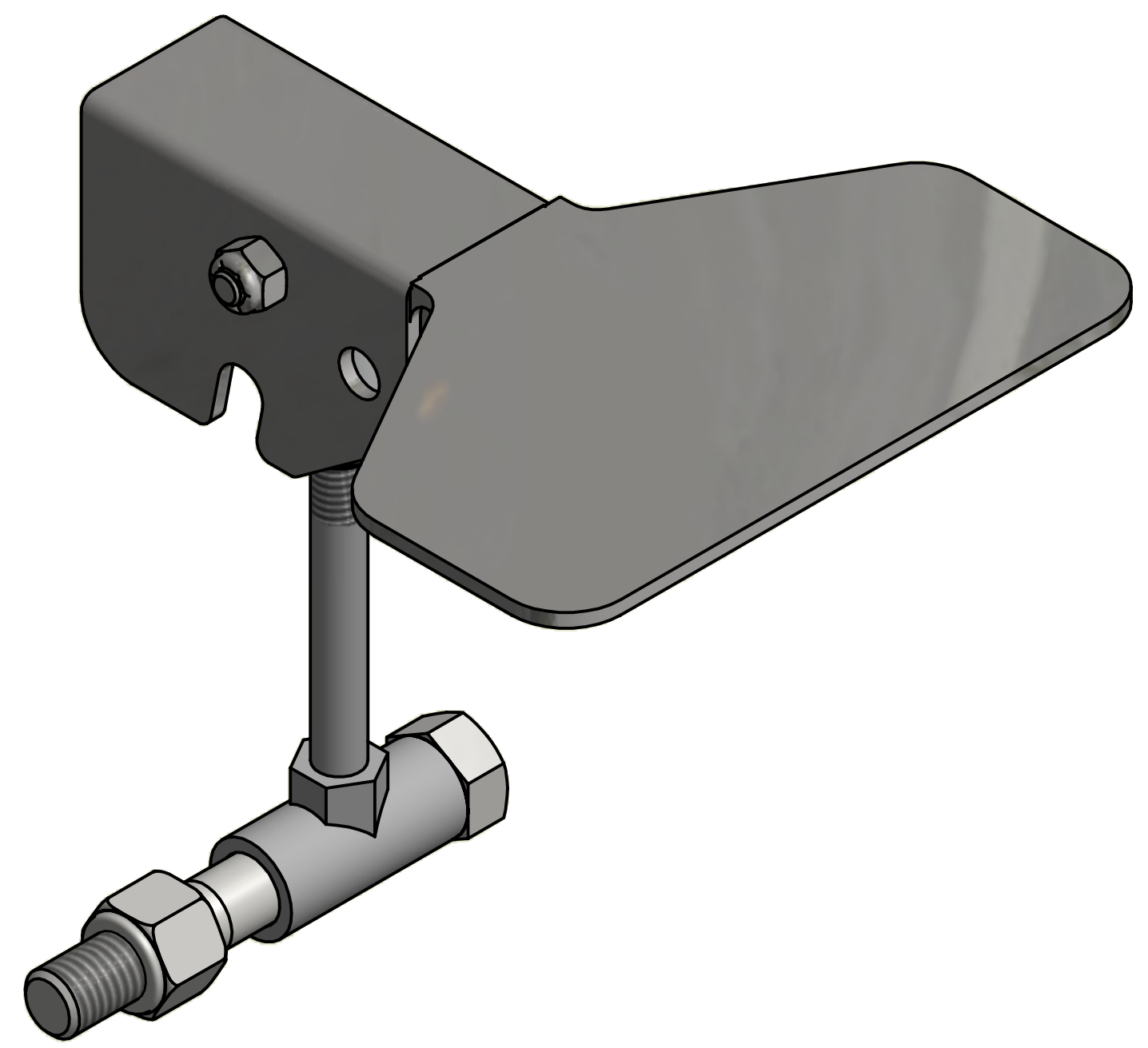
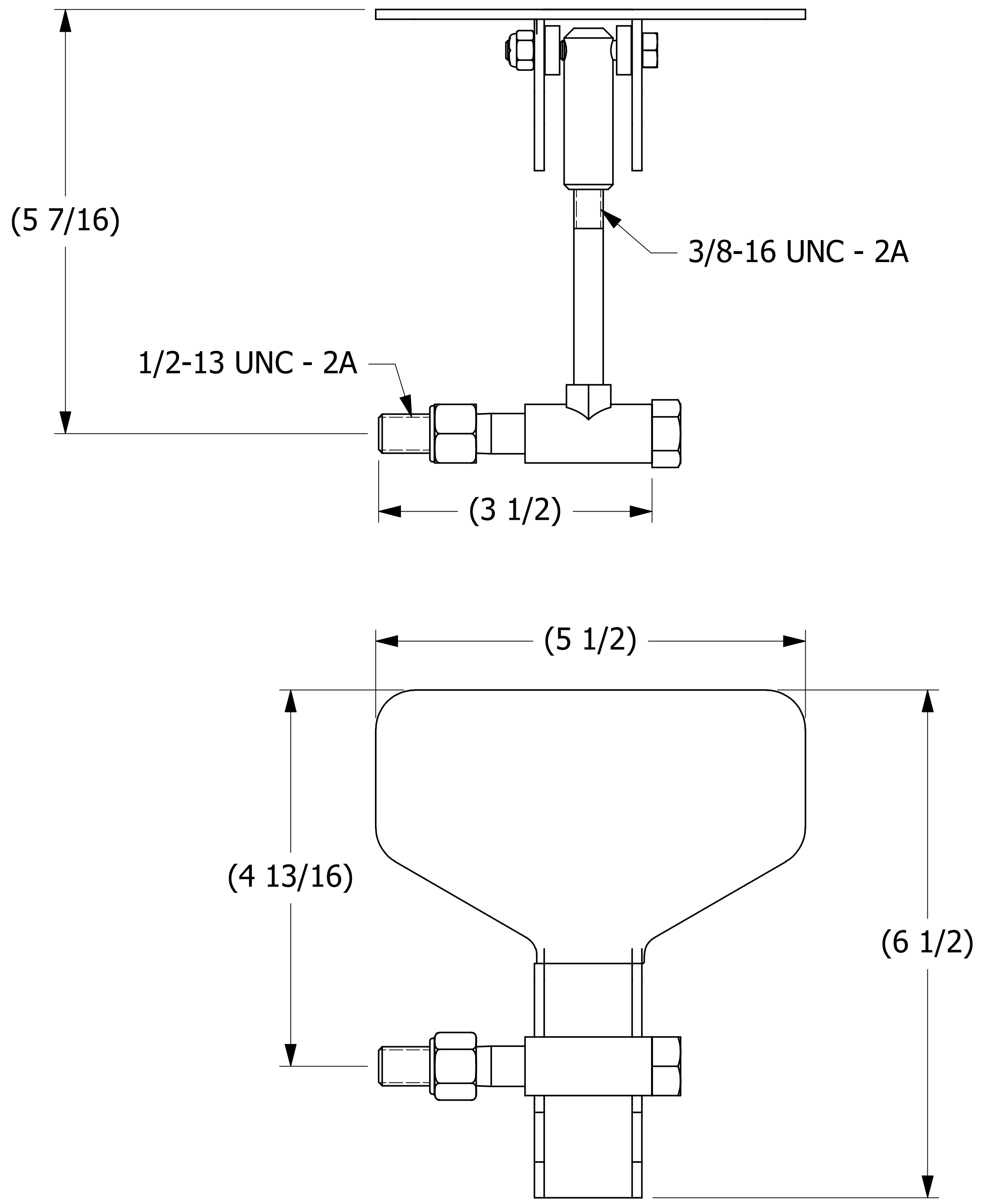


SALES DRAWING

SALES DRAWING



REV	BY	DATE	DESCRIPTION
D	REH	02-18-10	UPDATED DRAWING & DELETED NOTES
C	CHL	01-12-01	ADDED SUBASSEMBLIES AND NOTES
B	FOD	12-18-98	CHANGED MATERIAL DISCRIPTION FOR ITEM #1
A	ACC	04-03-98	UPDATED BOM

UNLESS OTHERWISE SPECIFIED DIMENSIONAL TOLERANCES FRACTIONAL: ±1/16 X.XX: ±.015 X.XXX: ±.005 ANGULAR: ±1° DEBURR ALL SHARP EDGES. ALL MACHINED SURFACES TO HAVE A 125 RMS FINISH UNLESS NOTED OTHERWISE. THIRD ANGLE PROJECTION	DRAWN BY:	BRW
	CHECKED BY:	CHL
	PROTOTYPE BY:	BRW
	PROTOTYPE DATE:	10/6/1994
	APPROVED FOR PRODUCTION BY:	B RW
	PRODUCTION DATE:	10/6/1994

SALCO PRODUCTS, INC.

HATCH COVER LATCH ASSEMBLY 20"

MATERIAL: **SS/CS**

PROJECT #: _____ SHEET #: **1 OF 1** SCALE: **1:1**

DRAWING #: **D7123** PART #: **LAL20TH**

THIS PRINT, PROPERTY OF SALCO PRODUCTS INC. CONTAINS PROPRIETARY INFORMATION AND MUST NOT BE COPIED, REPRODUCED, OR USED DETRIMENTALLY TO OUR INTEREST.